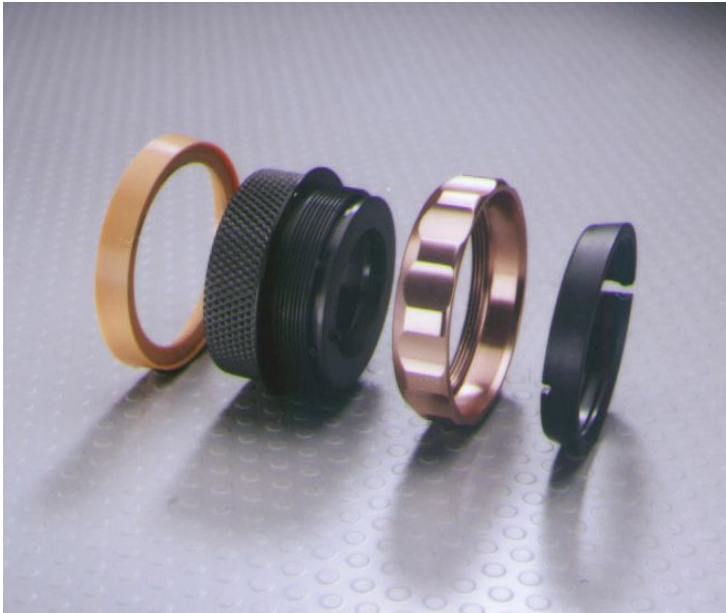


## ***Light-weight Wrists for Adults & Children***

### ***Light-weight Friction Wrist System:***



*Light-weight Friction Wrist*

- **Passive pro/supination**
- **User-adjustable friction**
- **Sizes for adults and children**
- **For use with Mechanical, Electric or passive hands**
- **Various hand interface adapters**
- **Compatible with most manufacturer's terminal devices**
- **Lamination collar**

### ***Light-weight Friction Wrists:***



**WU150** 1½" Light-weight Friction Wrist Assembly, complete  
*For use with smaller mechanical, electric and passive hands*  
*Requires adapter plate (see below)*

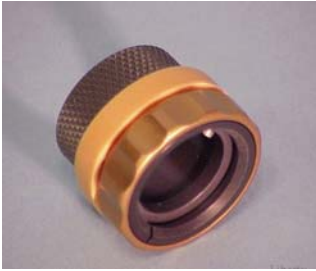


**WU175** 1¾" Light-weight Friction Wrist Assembly, complete  
*For use with small-to-medium mechanical, electric and passive hands*  
*Requires adapter plate (see below)*



**WU200** 2" Light-weight Friction Wrist Assembly, complete  
*For use with medium mechanical, electric and passive hands*  
*Requires adapter plate (see below)*

## ***Light-weight Wrists for Adults & Children***



**WU210** 2 1/8" Light-weight Friction Wrist Assembly, complete  
*For use with larger mechanical, electric and passive hands  
Requires adapter plate (see below)*

### ***Hand Connection Plates:***



**WM150** 1 1/2" Hand Connection Plate for Friction Wrist  
*For use with Light-weight Friction Wrists to attach mechanical or electric hand to wrist.. Order with corresponding Light-weight Wrist size (WU150)*



**WM175** 1 3/4" Hand Connection Plate for Friction Wrist  
*For use with Light-weight Friction Wrists to attach mechanical or electric hand to wrist.. Order with corresponding Light-weight Wrist size (WU175)*



**WM200** 2" Hand Connection Plate for Friction Wrist  
*For use with Light-weight Friction Wrists to attach mechanical or electric hand to wrist, Order with corresponding Light-weight Wrist size (WU200)*



**WM210** 2 1/8" Hand Connection Plate for Friction Wrist  
*For use with Light-weight Friction Wrists to attach mechanical or electric hand to wrist. Order with corresponding Light-weight Wrist size (WU210)*

# *Light-weight Wrists for Adults & Children*

## *Hand Adapter Plates:*



### **WM150** 1½” Hand Adapter Plate for Friction Wrist

*For use with Light-weight Friction Wrists to attach passive, mechanical or electric hands. Accepts ½-20 stud. Order with corresponding Light-weight Wrist size (WU150)*



### **WM175** 1¾” Hand Adapter Plate for Friction Wrist

*For use with Light-weight Friction Wrists to attach passive, mechanical or electric hands. Accepts ½-20 stud. Order with corresponding Light-weight Wrist size (WU175)*



### **WM200** 2” Hand Adapter Plate for Friction Wrist

*For use with Light-weight Friction Wrists to attach passive, mechanical or electric hand (½-20) stud to wrist. Order with corresponding Light-weight Wrist size (WU200)*



### **WM210** 2⅛” Hand Adapter Plate for Friction Wrist

*For use with Light-weight Friction Wrists to attach passive, mechanical or electric hands. Accepts ½-20 stud. Order with corresponding Light-weight Wrist size (WU210)*

## ***Light-weight Wrists for Adults & Children***

### ***Friction Rings:***



**WU154** Friction Ring for use with 1½" Friction Wrist  
*For use with corresponding Light-weight Friction Wrist (WU150)*



**WU174** Friction Ring for use with 1¾" Friction Wrist  
*For use with corresponding Light-weight Friction Wrist (WU175)*



**WU204** Friction Ring for use with 2" Friction Wrist  
*For use with corresponding Light-weight Friction Wrist (WU200)*



**WU214** Friction Ring for use with 2⅛" Friction Wrist  
*For use with corresponding Light-weight Friction Wrist (WU210)*